

Three views of Harry's world

In the journey from book to film, something often gets lost in the translation. The creators of the Wizarding World of Harry Potter attraction, which opened Friday at Universal's Islands of Adventure theme park, faced similar challenges. They set out to make a three-dimensional, real-life version of J.K. Rowling's beloved creations, known to millions of readers and filmgoers. Of course, not every element could be spotlighted in the 20-acre attraction, which includes Hogwarts castle (home of the ride called Harry Potter and the Forbidden Journey) and Hogsmeade village. Here's how some major elements from the Potter universe stack up in print, on screen and, now, in the park.

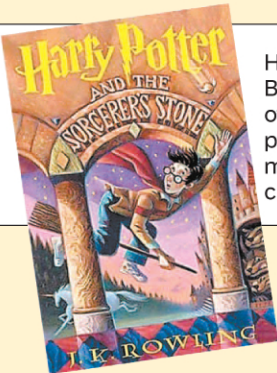
BOOKS

Seven stories tall with five towers and extensive grounds that include a lake, dense woods known as the Forbidden Forest and a Quidditch field.

Described in the first book as a small, shabby shop, with neat stacks of wands from floor to ceiling. The only window display is a single wand resting on a faded purple cushion.

Snowman? What snowman?

Four students compete for the Triwizard Cup: Harry Potter and Cedric Diggory, representing Hogwarts School of Witchcraft and Wizardry; Fleur Delacour from Beauxbatons Academy of Magic; and Viktor Krum of Durmstrang Institute.



He Who Must Not Be Named is one of the biggest presences and most important characters.

A half-giant, half-wizard who is Hogwarts' gamekeeper is described as "twice the size of a normal man and five times as wide."

A circular, open-air room where students' owls and the school owls live is at the top of Hogwarts' west tower.

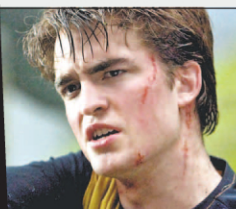
Appears alcoholic because Winky the house elf has to sleep off its effects.

FILMS

Actually a model.

In the first movie, Harry tries out several wands here — with disappointing results — until Mr. Ollivander hands him a holly wand with the core of a phoenix tail feather.

Nothing to see here.



Cedric is portrayed by Robert Pattinson, star of the *Twilight* films.

Played by Ralph Fiennes, Lord Voldemort appears in the first film attached to the back of Professor Quirrell's head. He comes to life in later movies as a tall, thin figure with snake-like facial features.

Camera angles and other tricks make actor Robbie Coltrane, who's 6-foot-1, appear large but not 10 feet tall.



First appears in *Harry Potter and the Goblet of Fire*.



In *Harry Potter and the Half-Blood Prince*, young Hermione looks tipsy after consuming it with Ron and Harry.



THEME PARK

The first exterior ever built of Hogwarts is 150 feet tall but lacks Black Lake and Forbidden Forest.



There's no Diagon Alley, so designers have created a "second location" of the shop in Hogsmeade. As in the books, guests are measured — from fingertip to armpit and every which way — to fit them with the right wand.

On the edge of Hogsmeade, in the shadow of Hogwarts, you'll see a snowman wearing a Gryffindor scarf.

The tournament is represented by the Dragon Challenge ride and queue. Although there are banners touting Harry, Fleur and Viktor, there's none for Cedric.



He's mentioned (by Dumbledore in Forbidden Journey) but only seen in doll form at the gift shop.

Hagrid doesn't roam the grounds at Universal — for that matter, no specific character does — but he's seen a couple of times in Forbidden Journey, and the hut can be spotted near Flight of the Hippogriff.



Situated on street level in Hogsmeade, it is one of the only places to find shade. Luckily, the floor isn't covered with owl droppings — just the rafters.



The only buzz you'll get from it may come from the sugar content. There's no alcohol involved.



Hogwarts castle

Ollivanders

Snowman in Hogsmeade

Triwizard Champions

Voldemort

Rubeus Hagrid

Owlery

Butterbeer

More online Find an interactive map of Wizarding World and an updated Thrill-O-Meter at OrlandoSentinel.com/harrypotter